

## Example of the "Report.xls" file:

\*\*\* BeamOn USB Measurement system, Version 5.11 \*\*\*

### User Data:

Date: 29 Dec 2013

Time: 17:07:15

System N: 000-013

CCD S/N: 4127D

Size: 720x576

Average: Off

Level I: 13.50%

Level II: 50.00%

Level III: 80.00%

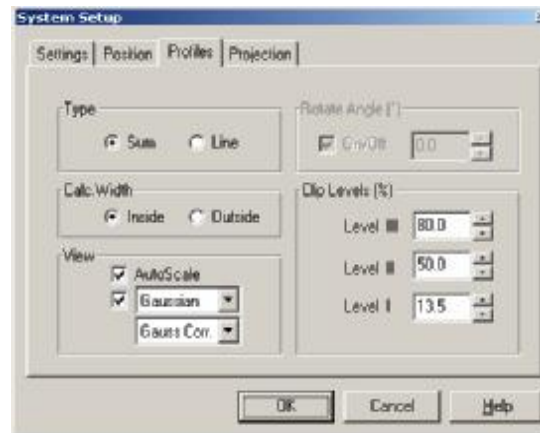
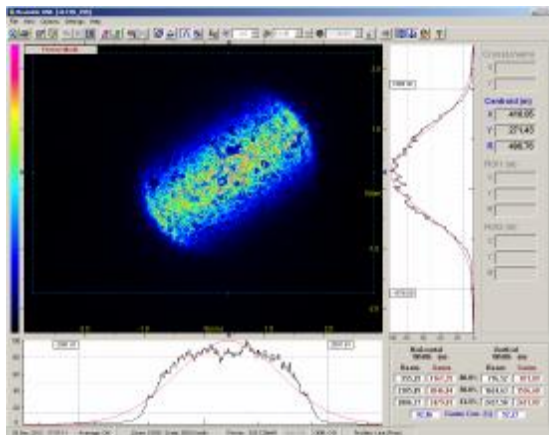
ProfAngle: Off

Gain: 6.0 dB

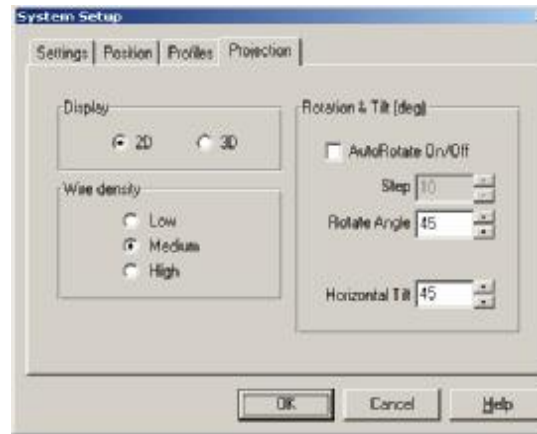
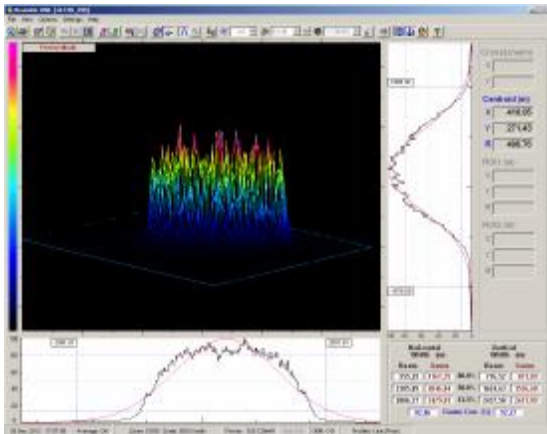
Shutter: 1 / 100000 sec

Optical Factor: x1.00

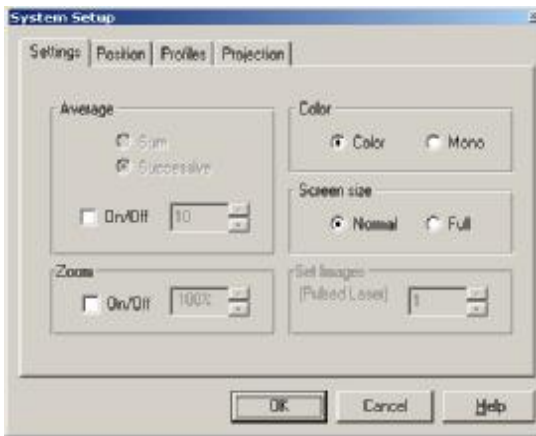
## 2D Projection



### 3D Projection



### System setup



### Hardware setup

